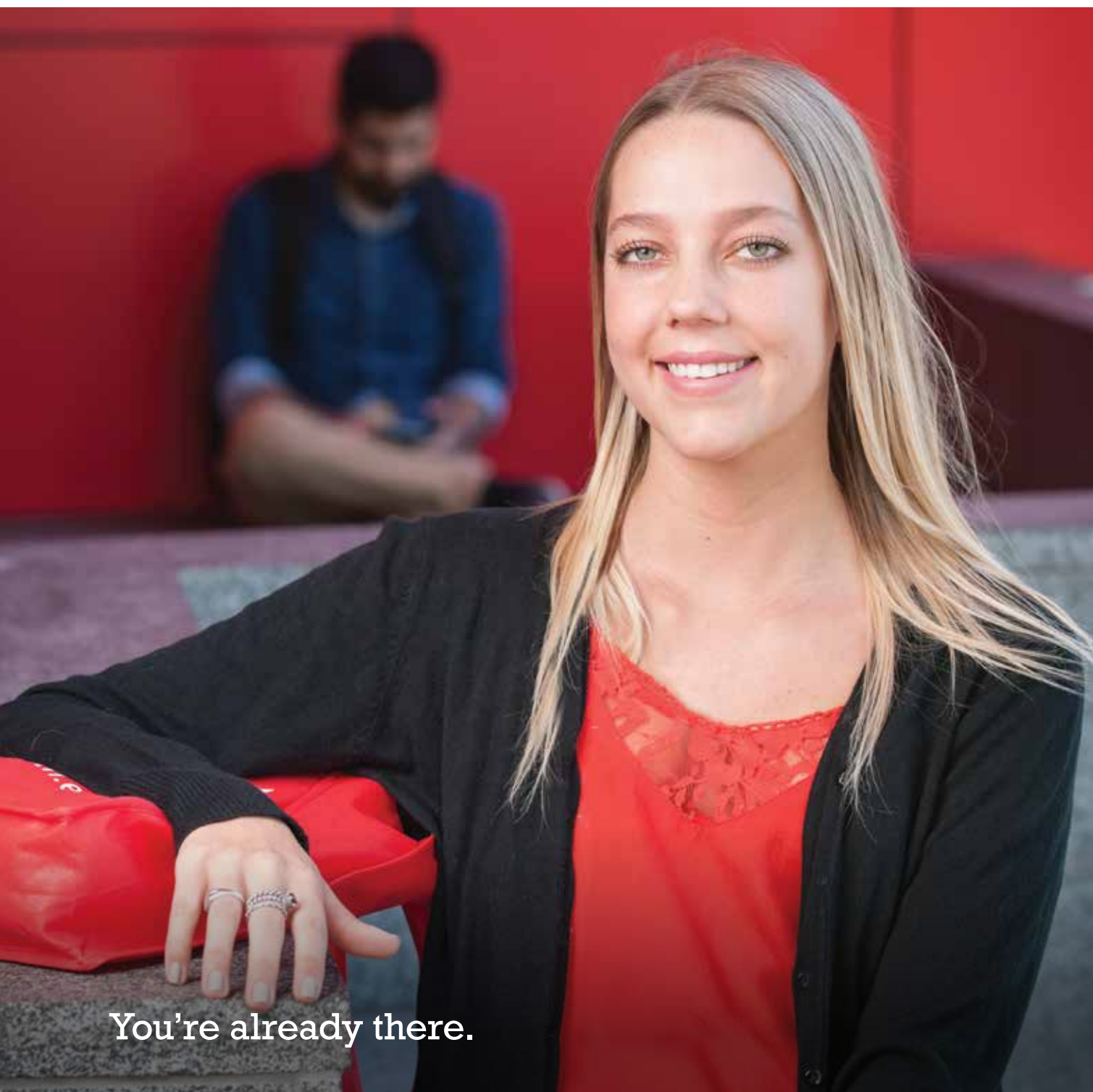


# AUSTRALIAN

STUDENT GUIDE 2016 | **BRISBANE & GOLD COAST**



You're already there.

# Welcome to Griffith College

## Your future starts here

Griffith College provides a well-designed degree pathway leading to a selection of professionally recognised degrees at Griffith University. Griffith College graduates are eligible for entry into second year of the equivalent bachelor degree at Griffith University, in Brisbane or the Gold Coast.

Over 13,500 college graduates have benefited from the small class sizes and supportive learning environment to go on and succeed in their studies at Griffith University.

## Legend

Abbreviations and symbols used throughout this guide:

---

G = Gold Coast  
M = Mt Gravatt  
N = Nathan  
S = South Bank

---

QTAC = Queensland Tertiary Admissions Centre

---

F = Full-time study  
P = Part-time study  
N/A = Not applicable

---

## Top five reasons to choose Griffith

1

### Ranked among the top 5% of all universities

With highly awarded teaching staff, expert researchers, industry connections, a comprehensive suite of degrees spanning all disciplines, and outstanding campus facilities, Griffith ranks among the top 50 universities under 50 worldwide.

2

### 200+ degrees in 10 broad study areas

For 40 years Griffith have pioneered cutting-edge, forward thinking programs in diverse study areas. The first university to recognise the importance of, and introduced degrees in, globally significant fields such as Asian studies and environmental studies.

3

### 12 study areas ranked among the top 200 in the world\*

Griffith is a top-ranked university with a welcoming atmosphere. They are one of the leading providers of higher education in the Asia-Pacific, with a reputation for research and teaching excellence.

4

### Over \$320 million in campus developments over the past five years

Griffith has an ongoing commitment to research and student facilities including the 6-star green rated Sir Samuel Griffith Centre at Nathan and the new Gold Coast Health and Knowledge precinct.

5

### Five stars for getting a job# ★★★★★

Griffith received five stars in the prestigious QS Stars ratings for graduate employability. At Griffith you'll gain the academic knowledge you'd expect from a world-class university, as well as the skills and confidence that employers want, giving you an edge in the job market.

DAY ONE

YOUR GRIFFITH DEGREE

Griffith College

Griffith University

Career

ALREADY ON THE UNIVERSITY CAMPUS FROM DAY ONE

\* 2015 QS World University Rankings by subject; # 2014 QS Stars University Ratings

# Contents

<b>Find the right program for you</b>	<b>2</b>
Certificate IV Tertiary Preparation Program	2
Diploma of Biosciences	2
Diploma of Commerce	3
Diploma of Criminology and Criminal Justice	4
Diploma of Design	4
Diploma of Engineering	5
Diploma of Health Care	5
Diploma of Health Sciences	6
Diploma of Hotel Management	7
Diploma of Information Technology	7
Diploma of Media and Communications	8
Associate Degree in Commerce and Business	8
<b>Why choose Griffith?</b>	<b>9</b>
<b>Pathway to Griffith University</b>	<b>9</b>
<b>Our campuses</b>	<b>10</b>
<b>Life on campus</b>	<b>10</b>
<b>Application form</b>	<b>11</b>
<b>Take the next step</b>	<b>13</b>



**Cover image:** Chelsea Sherrard-Smith is studying a Diploma of Health Care on the Gold Coast. She had heard from friends that Griffith College was a great introduction to university life. "The smaller class sizes are more personalised and it is a great environment to learn in. I have had fantastic relationships and support from both my teachers and peers at the College and they have all helped me achieve my goals and full potential."

## 2016 Key dates

### Semester 1

Orientation week	22–26 February
Classes	29 February–11 June
Mid- semester break	28 March –1 April

### Semester 2

Orientation week	20–24 June
Classes	27 June–8 October
Mid-semester break	8–12 August

### Semester 3

Orientation week	17–21 October
Classes	24 October–4 February 2017
Mid-semester break	26–30 December

### Health Care

Please note different teaching periods and start dates for Diploma of Health Care only.

#### Semester 1

Orientation week	22–26 February
Classes	29 February–27 May
Mid-semester break	28 March–1 April

#### Semester 2

Orientation week	6–10 June
Classes	13 June–9 September
Mid-semester break	18–22 July

# Find the right program for you

## Certificate IV Tertiary Preparation Program

Semesters	Campus	Start	2016 Program fees <sup>A</sup>
2-3 F	M / G	1 / 2 / 3	A\$12,800

### What you'll study

Griffith College's Certificate IV Tertiary Preparation Program is equivalent to year 12 (senior high school) and provides a bridge between secondary school and undergraduate studies. This program has been designed to adequately prepare you for entry to university-level programs in the fields of Arts, Commerce, Design, Engineering, Health, Hotel Management, Information Technology (IT) and Science.

## Diploma of Biosciences

Semesters	Campus	Start	2016 Program fees
2-3 F	M	1 / 2	A\$21,750

QTAC	Program title	Campus	Credit eligibility for Griffith degrees	Assumed knowledge*
087001	Diploma of Biosciences	M	80 CP <sup>†</sup>	English (4, SA), Maths A or B (4, SA)
087081	Bachelor of Biomedical Science	N	80 CP	English (4, SA), Maths B (4, SA) and at least one of Biology, Chemistry or Physics (or equivalent)
087281	Bachelor of Science Majors: Applied Mathematics, Biochemistry and Molecular Biology, Chemistry, Clinical Science, Microbiology	N	80 CP	English (4, SA), Maths A or B (4, SA)
087281	Bachelor of Science Majors: Aquatic Ecosystems, Environmental Science, Environmental Sustainability, Wildlife Biology	N	up to 70 CP <sup>†</sup>	English (4, SA), Maths A or B (4, SA)
087281	Bachelor of Science Majors: Computational Science, Physics	N	up to 60 CP	English, (4,SA), Maths A or B (4,SA)
087101	Bachelor of Science Majors: Bioinformatics, Environmental Science, Environmental Sustainability, Marine Biology, Wildlife Biology	G	up to 70 CP <sup>†</sup>	English, (4,SA), Maths A or B (4,SA)
087101	Bachelor of Science Majors: Computational Science, Physics	G	up to 60 CP <sup>†</sup>	English (4, SA), Maths A or B (4, SA)
087071	Bachelor of Forensic Science Majors: Forensic Chemistry, Forensic Molecular Biology	N	70 CP	English (4, SA), Maths B (4, SA)
087061	Bachelor of Marine Science Majors: Coastal Resources Management, Marine Chemical Sciences, Marine Ecology, Coastal Physical Science	G	up to 60 CP <sup>†</sup>	English (4, SA), Maths A or B (4,SA)

### What you'll study

Biosciences refer to the processes and systems that create, sustain or threaten life. By undertaking the Diploma of Biosciences you will develop foundational knowledge and skills in biological and clinical sciences, and understand their application to research and health care services.

During the program you will also have the opportunity to engage in basic level practical laboratory experiences.





## Diploma of Commerce

Semesters	Campus	Start	2016 Program fees <sup>A</sup>
2-3 F	M / G	1 / 2 / 3	A\$16,600

QTAC	Program title	Campus	Credit eligibility for Griffith degrees	Assumed knowledge*
081001	Diploma of Commerce	M	80 CP <sup>†</sup>	English (4, SA)
081091	Diploma of Commerce	G	80 CP <sup>†</sup>	English (4, SA)
081081	Diploma of Commerce → Bachelor of Business	N	80 CP	English (4, SA)
083081	Diploma of Commerce → Bachelor of Business	G	80 CP	English (4, SA)
081201	Diploma of Commerce → Bachelor of Business Information Systems	N	50 CP	English (4, SA)
081291	Diploma of Commerce → Bachelor of Business Information Systems	G	50 CP	English (4, SA)
081281	Diploma of Commerce → Bachelor of Commerce Majors: Accounting, Economics, Finance	M	80 CP	English (4, SA)
081281	Diploma of Commerce → Bachelor of Commerce Majors: Financial Planning	M	70 CP	English (4, SA)
083281	Diploma of Commerce → Bachelor of Commerce Majors: Accounting, Economics, Finance	G	80 CP	English (4, SA)
083281	Diploma of Commerce → Bachelor of Commerce Majors: Financial Planning	G	70 CP	English (4, SA)
081381	Diploma of Commerce → Bachelor of International Business	N	60 CP	English (4, SA)
083381	Diploma of Commerce → Bachelor of International Business	G	60 CP	English (4, SA)
081361	Diploma of Commerce → Bachelor of Laws/Bachelor of Commerce (Accounting)	N	80 CP	English (4, SA)
083361	Diploma of Commerce → Bachelor of Laws/Bachelor of Commerce (Accounting)	G	80 CP	English (4, SA)

### What you'll study

The Diploma of Commerce provides a pathway into the Griffith Business School, acclaimed as one of the best places to study business in Australia. Griffith Business School students have access to a range of innovative programs in areas such as international business, finance, accounting, management and marketing.

As a student, you will be equipped with business skills for the future and gain not only a qualification, but leadership skills and practical experience.

Stephanie Symes is studying her Diploma of Biosciences at Griffith College because she wanted a supportive learning environment to start her tertiary career.

“Each of my teachers went above and beyond to assist with our studies and preparing us for the next step. I highly recommend Griffith College as a launch pad for your further study.”



## Find the right program for you (continued)

### Diploma of Criminology and Criminal Justice

Semesters	Campus	Start	2016 Program fees <sup>A</sup>	
2–3 F	M	1 / 2 / 3	A\$17,320	

QTAC	Program title	Campus	Credit eligibility for Griffith degrees	Assumed knowledge*
081061	Diploma of Criminology and Criminal Justice	M	80 CP <sup>†</sup>	English (4, SA)
081071	Diploma of Criminology and Criminal Justice → Bachelor of Criminology and Criminal Justice	M	80 CP	English (4, SA)
081271	Diploma of Criminology and Criminal Justice → Bachelor of Criminology and Criminal Justice	G	80 CP	English (4, SA)
081051	Diploma of Criminology and Criminal Justice → Bachelor of Laws/ Bachelor of Criminology and Criminal Justice	N / M / G	80 CP	English (4, SA)
081061	Diploma of Criminology and Criminal Justice → Bachelor of Laws	N / G	40 CP	English (4, SA)

#### What you'll study

Criminology is the study of the complex issues of crime and criminal justice. Criminologists work in federal and state justice agencies such as research and statistics institutes, police departments and courts. Correctional authorities also employ criminologists as researchers, assessors and policy advisors, while others might work in private practice providing consulting services for law reform, justice, forensic psychology, behavioural science or crime statistics.

### Diploma of Design

Semesters	Campus	Start	2016 Program fees <sup>A</sup>	
2–3 F	M / G	1 / 2 (M) 1 / 2 / 3 (G)	A\$19,300	

QTAC	Program title	Campus	Credit eligibility for Griffith degrees	Assumed knowledge*
083002	Diploma of Design	M	80 CP <sup>†</sup>	English (4, SA)
083191	Diploma of Design	G	80 CP <sup>†</sup>	English (4, SA)
083311	Diploma of Design → Bachelor of Design	S	80 CP	English (4, SA)
083101	Diploma of Design → Bachelor of Design Futures with Honours	S	80 CP	English (4, SA)
083201 (M) / 083291 (G)	Diploma of Design → Bachelor of Digital Media Majors: Graphic Design, Creative Entrepreneurship, 3-Dimensional Design, Digital Design, Interior Design, Fashion Design, Photo Media, Studio Art	G	up to 80 CP <sup>†</sup>	English (4, SA)
083401	Diploma of Design → Bachelor of Photography <sup>^</sup>	S	70 CP	English (4, SA)

#### What you'll study

The Diploma of Design pathways into a range of creative degrees at Griffith's Queensland College of Art (QCA). Throughout your study program, you will be immersed in the core fundamentals of design in areas such as digital media, photography, studio art, 3D design, fashion, interior design and more. All programs have an industry focus, and have been developed with the assistance of professional art and design bodies.



## Diploma of Engineering

Semesters	Campus	Start	2016 Program fees <sup>a</sup>
2–3 F	M / G	1 / 2 / 3	A\$21,750

QTAC	Program title	Campus	Credit eligibility for Griffith degrees	Assumed knowledge*
086091	Diploma of Engineering	G	80 CP <sup>†</sup>	English (4, SA) (4, SA) Maths B (4, SA)
086291	Diploma of Engineering	M	80 CP <sup>†</sup>	English (4, SA) (4, SA) Maths B (4, SA)
086071	Diploma of Engineering → Bachelor of Engineering with Honours Majors: Environmental Engineering, Microelectronic Engineering	N	80 CP	N/A
086071	Diploma of Engineering → Bachelor of Engineering with Honours Majors: Electronic and Computer Engineering, Electronic and Energy Engineering	N	70 CP	N/A
086071	Diploma of Engineering → Bachelor of Engineering with Honours Majors: Software Engineering	N	60 CP	English (4, SA) Maths B (4, SA)
086081	Diploma of Engineering → Bachelor of Engineering Majors: Electronic and Biomedical Engineering, Electrical and Electronic Engineering, Mechatronic Engineering, Civil Engineering, Mechanical Engineering	G	80 CP	N/A
086251	Diploma of Engineering → Bachelor of Engineering Technology in Electronic and Computer Engineering	N	70 CP	English (4, SA) Maths B (4, SA)

### What you'll study

Engineering graduates are in high demand. Graduates of Griffith's engineering program possess a range of skills that make them highly employable. From the Diploma to your degree, you will learn from internationally recognised lecturers who maintain strong industry links. This ensures you receive foundational knowledge, combined with practical experiences and problem solving skills that employers are seeking.

## Diploma of Health Care

Semesters	Campus	Start	2016 Program fees <sup>a</sup>
2–3 F	G	1 / 2	A\$18,900

QTAC	Program title	Campus	Credit eligibility for Griffith degrees	Assumed knowledge*
081591	Diploma of Health Care	G	80 CP <sup>†</sup>	English (4, SA)
088671	Diploma of Health Care → Bachelor of Nursing	G / N / L	80 CP	English (4, SA)

### What you'll study

Nursing is a vibrant and challenging career focused on maintaining health and well being. The Diploma of Health Care has been designed to prepare students for entry to the second year of the Griffith University Bachelor of Nursing degree, although Diploma graduates can exit with knowledge, skills and attitudes for beginner level practice in a health care setting.

After completing high school, Britney chose to study at Griffith College because of the supportive learning environment and extensive facilities on offer.

"The Diploma of Criminology and Criminal Justice has given me many valuable skills and the confidence to continue my studies at Griffith University."



## Find the right program for you (continued)

### Diploma of Health Sciences

Semesters	Campus	Start	2016 Program fees <sup>a</sup>		
2–3 F	G	1 / 2	A\$21,500		

QTAC	Program title	Campus	Credit eligibility for Griffith degrees	Assumed knowledge*
081491	Diploma of Health Sciences	M	80 CP <sup>†</sup>	English (4, SA) and one of Biology, Chemistry, Physics or Maths B (4, SA)
088271	Diploma of Health Sciences → Bachelor of Biomedical Science	G	80 CP	English (4,SA), Maths B (4,SA) and at least one of Biology, Chemistry or Physics (4, SA)
088091	Diploma of Health Sciences → Bachelor of Exercise Science	G	70 CP	English (4, SA) and one of Biology, Chemistry, Physics or Maths B (4, SA)
088191	Diploma of Health Sciences → Bachelor of Exercise Science / Master of Physiotherapy <sup>β</sup>	G	60 CP	English (4, SA) and one of Biology, Chemistry, Physics or Maths B (4, SA)
088371	Diploma of Health Sciences → Bachelor of Health Science	G	80 CP	English (4, SA) and one of Biology, Chemistry, Physics or Maths B (4, SA)
088471	Diploma of Health Sciences → Bachelor of Medical Laboratory Science <sup>β</sup>	G	80 CP	English (4,SA), Maths B (4,SA) and at least one of Biology, Chemistry or Physics (4, SA)
081481	Diploma of Health Sciences → Bachelor of Nutrition and Dietetics <sup>β</sup>	G	80 CP	English (4, SA)
088871	Diploma of Health Sciences → Bachelor of Pharmacology and Toxicology (Can also package in a double degree with Bachelor of Business or Bachelor of Laws with 60 CP credit)	G	70 CP	English (4,SA), Maths B or C (4,SA) and at least one of Biology, Chemistry or Physics (4, SA)
088771	Diploma of Health Sciences → Bachelor of Pharmacy <sup>‡</sup>	G	60 CP	English (4,SA), Maths B or C (4,SA) and at least one of Biology, Chemistry or Physics (4, SA)
088271	Diploma of Health Sciences → Bachelor of Biomedical Science	N	40 CP	English (4,SA), Maths B (4,SA) and at least one of Biology, Chemistry or Physics (4, SA)

#### What you'll study

The Diploma of Health Sciences provides an interdisciplinary approach to the field of health science. It focuses on biological and biochemical aspects and provides a firm grounding in chemistry, cell biology, and anatomy.

The diploma has been designed to provide a comprehensive foundation for entry into the second year of a number of Griffith University degree level programs in health, although graduates will also exit the diploma with the knowledge and skills for beginner level employment in health-science related industries.



Kristina Kirin chose to study her Diploma of Health Care at Griffith College because she felt it gave her more support after a long break since high school.

“I receive more one on one support with smaller classes and more resources to lean on when I feel I need the help. It’s a privilege to have this level of support and care towards different needs of students.”



## Diploma of Hotel Management

Semesters	Campus	Start	2016 Program fees <sup>A</sup>	
2–3 F	M / G	1 / 2 / 3	A\$16,600	

QTAC	Program title	Campus	Credit eligibility for Griffith degrees	Assumed knowledge*
082001	Diploma of Hotel Management	M	80 CP <sup>†</sup>	English (4, SA)
082091	Diploma of Hotel Management	G	80 CP <sup>†</sup>	English (4, SA)
082081	Diploma of Hotel Management → Bachelor of International Tourism and Hotel Management	N	80 CP	English (4, SA)
083091	Diploma of Hotel Management → Bachelor of International Tourism and Hotel Management	G	80 CP	English (4, SA)
082101	Diploma of Hotel Management → Bachelor of Business Majors: Event Management; Sport Management; Real Estate and Property Development	N	80 CP	English (4, SA)
082101	Diploma of Hotel Management → Bachelor of Business Majors: All other majors	N	70 CP	English (4, SA)
082191	Diploma of Hotel Management → Bachelor of Business Majors: Event Management; Sport Management; Real Estate and Property Development	G	80 CP	English (4, SA)
082191	Diploma of Hotel Management → Bachelor of Business Majors: All other majors	G	70 CP	English (4, SA)
082221	Diploma of Hotel Management → Bachelor of Commerce Majors: Accounting, Economics, Finance	N	60 CP	English (4, SA)
082291	Diploma of Hotel Management → Bachelor of Commerce Majors: Accounting, Economics, Finance	G	60 CP	English (4, SA)
082421 (M) / 082491 (G)	Diploma of Hotel Management → Bachelor of Government and International Relations	N / G	60 CP	English (4, SA)
082321 (M) / 082391 (G)	Diploma of Hotel Management → Bachelor of International Business	N / G	60 CP	English (4, SA)

### What you'll study

In the Diploma of Hotel Management, you will learn about the service industry in general, as well as basic hotel operating skills. You will also gain basic management and accounting skills.

Hospitality and tourism industries contribute more than A\$4 trillion in gross global output, which translates into millions of jobs worldwide.

## Diploma of Information Technology

Semesters	Campus	Start	2016 Program fees <sup>A</sup>	
2–3 F	M	1 / 2 / 3	A\$17,850	

QTAC	Program title	Campus	Credit eligibility for Griffith degrees	Assumed knowledge*
084001	Diploma of Information Technology	M	80 CP <sup>†</sup>	N/A
084101	Diploma of Information Technology → Bachelor of Business Information Systems	N / G	40 CP	English (4, SA)
084081	Diploma of Information Technology → Bachelor of Information Technology	N / G	80 CP	N/A
084091	Diploma of Information Technology → Bachelor of Information Technology / Bachelor of Multimedia	N / G	80 CP	N/A
084071	Diploma of Information Technology → Bachelor of Multimedia	N / G	60 CP	N/A

### What you'll study

The Diploma of IT will give you a broad understanding of all aspects of IT to equip you for further studies in computer programming, computer science, database administration, information systems, interactive web development, software engineering and systems design.

## Find the right program for you (continued)

### Diploma of Media and Communications

Semesters	Campus	Start	2016 Program fees <sup>Δ</sup>
2-3 F	G	1 / 2 / 3	A\$17,900

QTAC	Program title	Campus	Credit eligibility for Griffith degrees	Assumed knowledge*
085091	Diploma of Media and Communications	G	80 CP <sup>†</sup>	English (4, SA)
085071	Diploma of Media and Communications → Bachelor of Journalism	N / G	80 CP	English (4, SA)
085171	Diploma of Media and Communications → Bachelor of Public Relations and Communication	N / G	80 CP	English (4, SA)
085161	Diploma of Media and Communications → Bachelor of Arts	N / G	60 CP	English (4, SA)

#### What you'll study

This wide ranging program was developed to meet the changing needs of the industry and encompasses communication skills and techniques including screen production, analysis of the mass media and communication industries, marketing, public relations, creative writing, new technologies and journalism.

### Associate Degree in Commerce and Business

Semesters	Campus <sup>‡</sup>	Start	2016 Program fees <sup>Δ</sup>
1st year entry 4-6 F	M / G	1 / 2 / 3	1st year entry A\$33,200
2nd year entry 2-3 F			2nd year entry: \$16,600

QTAC	Program title	Campus	Credit eligibility for Griffith degrees	Assumed knowledge*
081101	Associate Degree in Commerce and Business	M	160 CP <sup>†</sup>	English (4, SA)
081191	Associate Degree in Commerce and Business	G	160 CP <sup>†</sup>	English (4, SA)
081101	Associate Degree in Commerce and Business → Bachelor of Commerce Majors: Accounting, Finance	N	160 CP	English (4, SA)
081101	Associate Degree in Commerce and Business → Bachelor of Business Majors: Management, Human Resource Management	N	160 CP	English (4, SA)
081191	Associate Degree in Commerce and Business → Bachelor of Business Majors: Management, Human Resource Management	G	160 CP	English (4, SA)
081101	Associate Degree in Commerce and Business → Bachelor of International Tourism and Hotel Management	N	160 CP	English (4, SA)
081191	Associate Degree in Commerce and Business → Bachelor of International Tourism and Hotel Management	G	160 CP	English (4, SA)

#### What you'll study

Griffith College's Associate Degree in Commerce and Business is a two-year program leading to the third year of a Griffith University Bachelor of Commerce, Bachelor of International Tourism and Hotel Management or Bachelor of Business degree. Griffith College Diploma of Commerce or Hotel Management graduates who do not meet requirements to enter the second year of the Griffith University Bachelor of Commerce, Bachelor of International Tourism and Hotel Management or Business are eligible for one year of credit within the Associate Degree.

#### Codes

<sup>Δ</sup> This fee applies to Australian citizens and permanent residents. Program fees are subject to change.

<sup>‡</sup> Not all majors are available at both campuses.

<sup>†</sup> Credit availability depends on the major chosen within the degree course and/or the degree.

<sup>\*</sup> A requirement that you must complete to gain admission to a university. Bridging subjects are available to you for free if you do not possess the prerequisite (or 'need to have') knowledge for your diploma. Information on Bridging subjects can be found at [griffithcollege.edu.au](http://griffithcollege.edu.au)

<sup>^</sup> Students must submit a portfolio.

<sup>‡</sup> Quota of 10 places for the Bachelor of Pharmacy

<sup>β</sup> Quota of 5 places for the Bachelor of Medical Laboratory Science; Bachelor of Nutrition and Dietetics; Bachelor of Exercise Science/Master of Physiotherapy

# Why choose Griffith?

Griffith University gives you more than just a degree. Griffith's innovative and practical approach to learning ensures you will graduate job ready with the skills and contacts you need to succeed in your field.

Since its beginnings in the 1970s, Griffith has had a strong focus on internationalisation and is privileged to host students from over 130 countries.

## Support services to help you succeed

As a full-degree student you will have access to free support services including the Griffith international advisors, Griffith Mates student mentors, careers and employment advice, and computer and academic workshops.

## Leaders in global student mobility

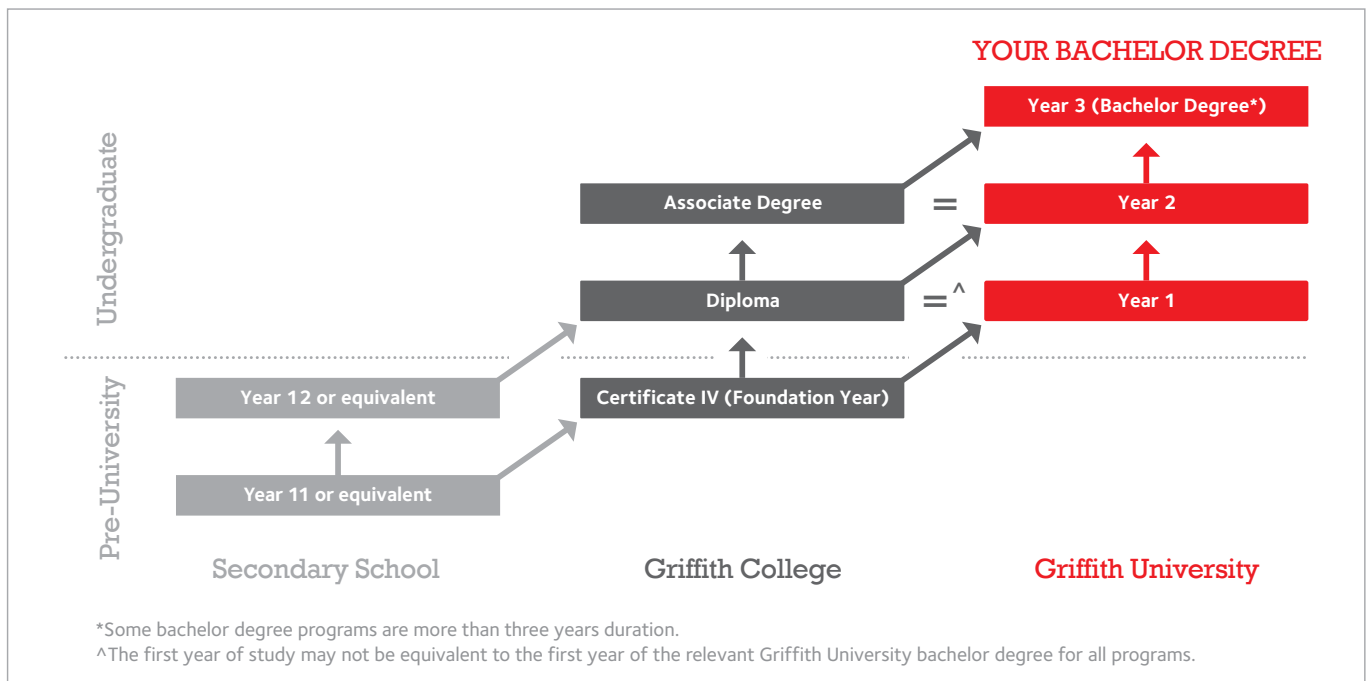
In your bachelor degree, you can spend one or two semesters at a partner university, or participate in a short term program and add an international experience to your resume.

## Gain work experience while you study

You can enrol in a community internship through Work-integrated Learning options or sign up for the University's Industry Mentoring Program to create networks and gain insights in to your industry.



# Pathway to Griffith University



# Our campuses

As a Griffith College student, you are so close to Griffith University you are already there. Griffith College is based on campus at Griffith University's Mt Gravatt and Gold Coast campuses.



Mt Gravatt Campus

## Mt Gravatt

With a tranquil bush location and panoramic views of Brisbane City, Mt Gravatt campus is the hub for Griffith's programs focusing on social issues including criminology, education and psychology. There are many on-campus koala sightings annually.

## Gold Coast

Griffith's Gold Coast campus is the largest of their five campuses and is very close to the beach. After a class in one of the state-of-the-art learning centres, you can catch the light rail to the beach to study outdoors or have a rejuvenating swim.



Gold Coast Campus

# Life on campus

Griffith College will support you on your journey to becoming an independent learner. A range of support services and programs are available to ensure you achieve your academic potential while developing personally and maintaining a balanced lifestyle. These services are available to all students and are provided at no additional cost.

## 1. Arrival

### **ORIENTATION AND ENROLMENT**

Your orientation program will provide all the information you need to settle in at Griffith College as quickly as possible so attendance is compulsory.

## 2. Life

### **CLUBS AND SOCIETIES**

Griffith University has over 120 clubs in cultural, religious, political, educational, sporting, professional and special interest areas. The College also runs extra-curricular programs each week, so there is always something happening on campus, from free movie nights to social sports matches. [griffith.edu.au/clubs](http://griffith.edu.au/clubs)

### **DISABILITY SUPPORT**

If you have a disability you can access support from our student advisors. Please contact them before you arrive at Griffith College so we can make your time here as enjoyable as possible.

## 3. Learn

### **ACADEMIC AND WELFARE GUIDANCE**

Assistance is never far away. The College offers a free and confidential welfare and counselling service to all students. Student advisors are also available to assist with your academic progress.

### **PEER MENTOR PROGRAM**

Current students, just like you, who understand what you are feeling can help you to adjust to life and study at Griffith College.

## 4. Transition to Griffith University

Every semester we hold a graduation ceremony for students who successfully complete their Tertiary Preparation, diploma and degree programs at Griffith College. We also hold information sessions to help students with their progression to their degree program at Griffith University.



# Australian students application form

Please print in BLOCK LETTERS

## Personal details

Title: <input type="checkbox"/> Mr <input type="checkbox"/> Ms <input type="checkbox"/> Mrs <input type="checkbox"/> Miss <input type="checkbox"/> Other	
Family name:	
Given names:	Preferred name:
Date of birth: DAY / MONTH / YEAR	Gender: <input type="checkbox"/> Male <input type="checkbox"/> Female
City of birth	Country of birth:
Citizenship:	
Australian Government Unique Student Identifier (USI):	
Have you previously studied at Griffith College (formerly QIBT)? <input type="checkbox"/> Yes <input type="checkbox"/> No	
If 'yes', please provide your Griffith College /QIBT student ID number:	
Do you grant Griffith College permission to provide your listed parent or guardian with any information pertaining to your application to study, ongoing academic progress, results and attendance? <input type="checkbox"/> Yes <input type="checkbox"/> No	

## Contact details

Applicant's contact details	
Address:	
Tel (home):	Tel (mobile):
Email address:	
Parent/guardian's contact details	
Family name:	Given name:
Relationship to applicant:	
Address:	
Tel (home):	Tel (mobile):
Tel (business):	
Email address:	

## Program selection

Please complete the relevant section for each program you wish to undertake, including the Griffith University degree program, major and campus. You must also specify the year and month you wish to commence at Griffith College.

Pre-university level							
Certificate IV Tertiary Preparation Program		<input type="checkbox"/> Mt Gravatt	<input type="checkbox"/> Gold Coast	Year: _____	<input type="checkbox"/> February	<input type="checkbox"/> June	<input type="checkbox"/> October
University level							
Diploma of Biosciences	<input type="checkbox"/> Mt Gravatt			Year: _____	<input type="checkbox"/> February	<input type="checkbox"/> June	
Diploma of Commerce	<input type="checkbox"/> Mt Gravatt	<input type="checkbox"/> Gold Coast		Year: _____	<input type="checkbox"/> February	<input type="checkbox"/> June	<input type="checkbox"/> October
Diploma of Criminology & Criminal Justice	<input type="checkbox"/> Mt Gravatt			Year: _____	<input type="checkbox"/> February	<input type="checkbox"/> June	<input type="checkbox"/> October
Diploma of Design	<input type="checkbox"/> Mt Gravatt	<input type="checkbox"/> Gold Coast		Year: _____	<input type="checkbox"/> February	<input type="checkbox"/> June	<input type="checkbox"/> October
Diploma of Engineering	<input type="checkbox"/> Mt Gravatt	<input type="checkbox"/> Gold Coast		Year: _____	<input type="checkbox"/> February	<input type="checkbox"/> June	<input type="checkbox"/> October
Diploma of Health Care	<input type="checkbox"/> Gold Coast			Year: _____	<input type="checkbox"/> February	<input type="checkbox"/> June	
Diploma of Health Sciences	<input type="checkbox"/> Gold Coast			Year: _____	<input type="checkbox"/> February	<input type="checkbox"/> June	
Diploma of Hotel Management	<input type="checkbox"/> Mt Gravatt	<input type="checkbox"/> Gold Coast		Year: _____	<input type="checkbox"/> February	<input type="checkbox"/> June	<input type="checkbox"/> October
Diploma of Information Technology	<input type="checkbox"/> Mt Gravatt			Year: _____	<input type="checkbox"/> February	<input type="checkbox"/> June	<input type="checkbox"/> October
Diploma of Media and Communication	<input type="checkbox"/> Gold Coast			Year: _____	<input type="checkbox"/> February	<input type="checkbox"/> June	<input type="checkbox"/> October
Associate Degree in Commerce and Business	<input type="checkbox"/> Mt Gravatt	<input type="checkbox"/> Gold Coast		Year: _____	<input type="checkbox"/> February	<input type="checkbox"/> June	<input type="checkbox"/> October

Griffith University: (This section must be completed, including your desired major/specialisation where relevant.)

Program (e.g. BCom)	Specialisation (e.g. Accounting)	Campus (e.g. Mt Gravatt)
---------------------	----------------------------------	--------------------------

## Previous studies

### Secondary: highest level achieved

Name of qualification (e.g. Year 12, Cert IV, Diploma):	
Name of school:	
Country:	
Completed: <input type="checkbox"/> Yes <input type="checkbox"/> No	Year completed:
Language of instruction:	

### Post-secondary: highest level achieved

Name of qualification (e.g. Degree, Diploma):	
Name of institution:	
Country:	
Completed: <input type="checkbox"/> Yes <input type="checkbox"/> No	Year completed:

Will you be applying for exemptions (recognition of prior learning)?

Yes  No If so, provide copies of relevant academic transcripts and a completed Credit for Prior Learning form (visit [griffithcollege.edu.au](http://griffithcollege.edu.au) and follow the link to 'Publications and forms').

## Bridging subjects

Please select the Bridging subject/s you require to meet the 'Assumed Knowledge' entry requirements for your desired Diploma program. If you are unsure, please visit [griffithcollege.edu.au](http://griffithcollege.edu.au)

English	<input type="checkbox"/> Mt Gravatt	<input type="checkbox"/> Gold Coast
Maths B	<input type="checkbox"/> Mt Gravatt	<input type="checkbox"/> Gold Coast
Chemistry	<input type="checkbox"/> Mt Gravatt	<input type="checkbox"/> Gold Coast
Physics	<input type="checkbox"/> Mt Gravatt	<input type="checkbox"/> Gold Coast
Biology	<input type="checkbox"/> Mt Gravatt	<input type="checkbox"/> Gold Coast

If you do NOT require Bridging Subject/s, please tick this box.



## Alternative entry

Applicants must be 18 years or over at the time of commencement. Assessment is based on work experience relevant to the program. Please attached a detailed CV and references.

## Accommodation

Do you require Griffith College to arrange accommodation for you?  Yes  No  
If 'yes', what type of accommodation:  Homestay  On-campus  
Please contact [accommodation@griffithcollege.edu.au](mailto:accommodation@griffithcollege.edu.au) or visit [griffithcollege.edu.au](http://griffithcollege.edu.au) for more information

## Request for disability support

Do you have a disability that may affect your studies?  Yes  No  
If 'yes', please specify:  Hearing  Vision  Mobility  Medical  Learning  Other (please specify): \_\_\_\_\_  
Please attach relevant information so that Griffith College and Griffith University can arrange assistance if possible.

Have you ever been excluded or has your course been terminated by a college or university in Australia?  Yes  No  
If 'yes', please provide name of the college or university: \_\_\_\_\_

## Application checklist

Check that you have:

- read carefully and completed all sections of the Application form
- read and understood the Conditions of Enrolment and Fee Refund Policy (Griffith College's full Refund policy is available at [griffithcollege.edu.au](http://griffithcollege.edu.au))

Check that you have attached:

- certified copies of your academic qualifications\*
- a copy of your passport, visa or birth certificate (if required)
- any relevant employment documentation (if required)
- certified translations of any documents not in English
- statement of results/senior statement/tertiary entrance statement

\* A certified copy is signed by an authorised officer to acknowledge that it matches the original document exactly. Authorised officers include: staff of the Griffith College office in Brisbane; an authorised Griffith College representative (visit [griffithcollege.edu.au](http://griffithcollege.edu.au) and follow the link to 'Griffith College Representatives' for details); staff of the institution that issued the document; a Justice of the Peace or Public Notary; or staff of an Australian Embassy, High Commission or Consulate.

Please note: Your application will not be processed if any details are not provided.

## Declaration and signature

I declare the information I have supplied on this form is, to the best of my understanding and belief, complete and correct. I understand that giving false or incomplete information may lead to my application being refused or my enrolment cancelled. I have read and understood the relevant program information in this brochure and/or on the Griffith College website and I have sufficient information about Griffith College to enrol. I understand that the pathway may lead to future studies at Griffith University, subject to Griffith University's entry requirements. I understand that if I have applied through an approved Griffith College or Griffith University agent, all correspondence relating to my application will be forwarded to that agent. I understand that Griffith College fees may increase.

I accept liability for payment of all fees as explained in the Griffith College brochure, and I agree to abide by the Refund Policy. I have understood and I accept the Conditions of Enrolment.

I understand that Griffith College may, by written notice, vary its conditions as may be necessary to comply with any law or regulation, or amendment of any law or regulation, of the Commonwealth of Australia or the State of Queensland.

I give permission for Griffith College and Griffith University to obtain official records from an educational institution attended by me, and to supply my contact details and any relevant official records to educational institutions I am eligible to gain admission to. I authorise Griffith College to provide my personal information, including my contact details and enrolment details, to third parties in accordance with Griffith College's Privacy Policy. These third parties

include Griffith College representatives (agents) acting on my behalf; Griffith University (to facilitate progression from Griffith College to the next stage of my studies); and Navitas Limited and its affiliates (to communicate regarding pathways and services offered by Navitas Limited and its related companies). In the event of any suspected breach of my student visa conditions, I authorise Griffith College to provide my personal information, including my contact details and enrolment details, to the Australian Government's designated authorities, the Tuition Assurance Scheme and the ESOS Assurance Fund Manager. I understand that any conditions concerning an offer of admission will be contained in my letter of offer from Griffith College, which I will be required to read and sign.

## Privacy Statement

Griffith College collects, stores and uses personal information only for the purposes of administering student and prospective student admissions, enrolment, education and articulation to Griffith University, including disclosure to Griffith College representatives (agents) acting on my behalf; Griffith University (to facilitate progression from Griffith College to the next stage of my studies); and Navitas Limited and its affiliates (to communicate regarding pathways and services offered by Navitas Limited and its related companies), my OSHC provider (to facilitate membership and maintain cover), the Australian Government's designated authorities and the Tuition Protection Scheme Director.

For further information, I am aware I can consult the Griffith College Privacy Policy, [policy.griffithcollege.edu.au](http://policy.griffithcollege.edu.au)

**Applicant's signature:**  
(Must be the same signature as in your passport or official ID)

Date: DAY / MONTH / YEAR

If you are under 18 years of age, your parent or guardian must also sign this application form.

**Parent's/guardian's signature:**

Date: DAY / MONTH / YEAR

Unsigned applications cannot be processed.  
Agents may not sign on behalf of the applicant.

## Postal address for applications

Admissions Office  
Griffith College  
Griffith University  
Mount Gravatt Campus  
176 Messines Ridge Road  
Mount Gravatt QLD 4122 Australia

T +61 7 3735 6900 F +61 7 3735 6901  
E [admissions@griffithcollege.edu.au](mailto:admissions@griffithcollege.edu.au) W [griffithcollege.edu.au](http://griffithcollege.edu.au)

Or through a Griffith College representative

Representative's stamp

CRICOS provider codes: Griffith College 01737F; Griffith University 00233E

# Take the next step

## Decided what you want to study?

Australian and New Zealand citizens and permanent residents of Australia should apply through the Queensland Tertiary Admissions Centre (QTAC). When applying for a program via QTAC, you will need to use a QTAC code when referring to your chosen program. These are listed against each program and degree in this guide. For further information visit

[qtac.edu.au](http://qtac.edu.au)

## FEE-HELP

### GET A MORE DETAILED STUDY GUIDE

Griffith College is a recognised Higher Education Provider (HEP) and allows eligible students to access the FEE-HELP loan scheme. This scheme allows students to borrow all or part of their tuition fees. For more information visit [studyassist.gov.au](http://studyassist.gov.au)

## Do you have a question?

For detailed information about Griffith College, head to our website and find out more about the course structures and admission requirements to Griffith University.

[griffithcollege.edu.au](http://griffithcollege.edu.au)

## CONTACT US

### Brisbane

176 Messines Ridge Road  
Mt Gravatt QLD 4122  
T +61 7 3735 6900

### Gold Coast

Parklands Drive  
Southport QLD 4222  
T +61 7 5552 8500

E [griffithcollege@navitas.com](mailto:griffithcollege@navitas.com)



**Anshul Kala**  
**Diploma of Commerce**

"Studying at Griffith has broadened my perspective and given me the confidence, opportunities and the practical tools to go on and achieve my goals after graduation."

# YOUR PATHWAY TO GRIFFITH UNIVERSITY

**You're already there.**

**[griffithcollege.edu.au](http://griffithcollege.edu.au)**

Part of the Navitas Group

**navitas** 

ABN: 38 076 195 027; RTO national code: 5300; CRICOS provider codes: Griffith College 01737F; Griffith University 00233E. The information contained in this guide is correct at the time of publication; however, Queensland Institute of Business and Technology (Griffith College) reserves the right to alter, amend or delete details at any time without notice. This guide is provided free of charge. Printed November 2015. GC150828-1419\_1115\_AW